

AMERICAN AUDIO VMS4

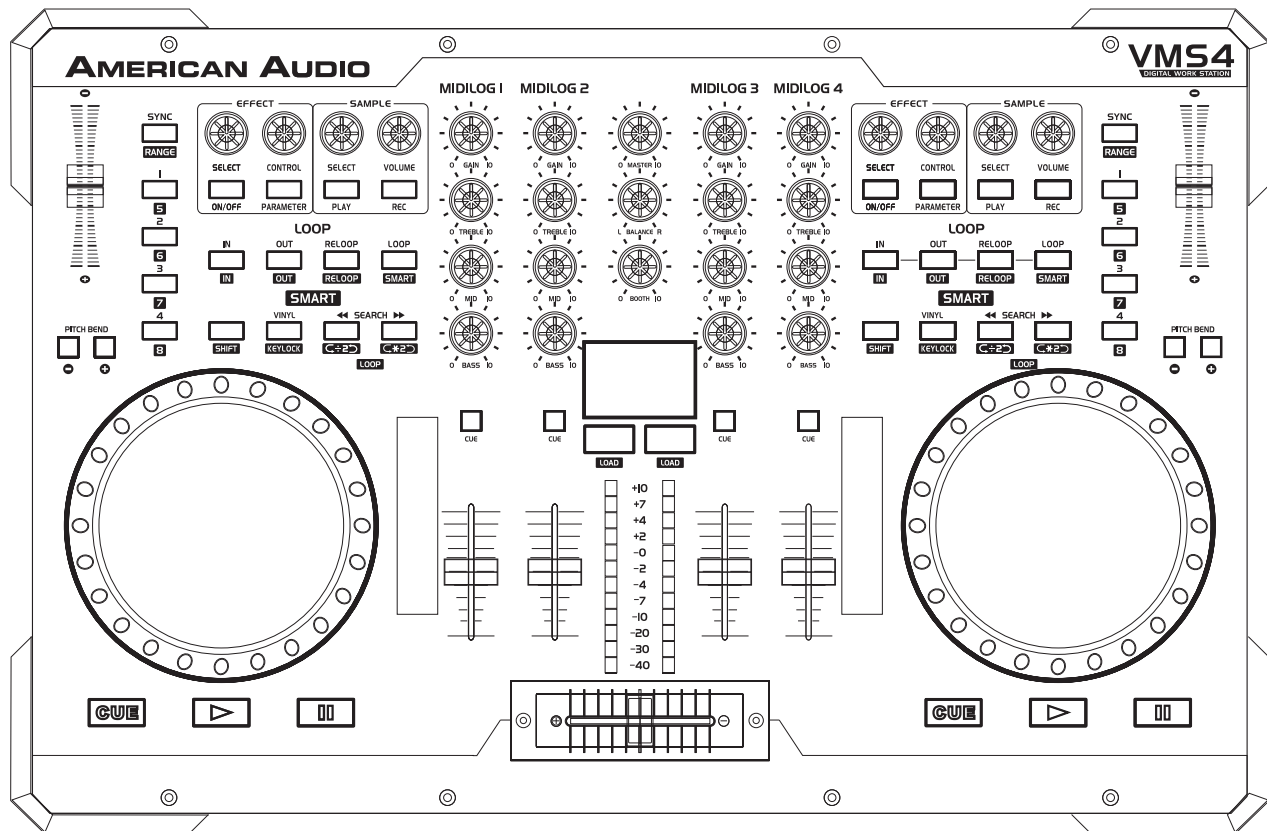
Professional Digital Producer

Featuring:

MIDI
COMPLIANT



seamless loop



User Guide and Reference Manual

AMERICAN AUDIO
6122 S. Eastern Ave
Los Angeles Ca. 90040
www.americanaudio.us

CONTENTS

SAFETY PRECAUTIONS.....	3
ELECTRICAL PRECAUTIONS.....	4
SAFETY INSTRUCTIONS.....	5
UNPACKING.....	6
CUSTOMER SUPPORT.....	6
SET-UP PRECAUTIONS.....	6
FEATURES.....	7
SET-UP INSTALLATION.....	7
ASIO DRIVER INSTALLATION.....	8
FUNCTIONS AND CONTROLS.....	9
AUDIO INTERFACE MODE.....	17
EQ MODES.....	19
FIRMWARE UPDATE.....	21
COMPUTER CONNECTION.....	22
SET UP.....	24
WARRANTY.....	26
SPECIFICATIONS.....	27

Please visit one of the following websites to view and download the VMS4 MIDI table chart.

www.americanaudio.com

www.americanaudio.eu

www.vms4dj.com

Please Note: All specifications and improvements to and in the design of this unit and this manuals are subject to change at any time without any prior written or published noticed.

For service parts visit <http://parts.americandj.com>

IMPORTANT SAFETY PRECAUTIONS

IMPORTANT SAFETY ITEMS FOR U.S.A. & CANADA MODEL ONLY

WARNING:

TO PREVENT FIRE OR SHOCK HAZARD, DO NOT EXPOSE THIS Media Controller TO WATER OR MOISTURE

CAUTION:

1. Handle the power supply cord carefully. Do not damage or deform; it may cause electric shock or malfunction when used. Hold plug attachment when removing from wall outlet. Do not pull on the cord.
2. To avoid electric shock, do not open the top cover when the unit is plugged in. If problems occur with the unit, call your local American Audio® dealer.
3. Do not place metal objects or spill liquid inside the Media Controller. Electric shock or malfunction may occur.



CAUTION

**Do not open -
Risk of electric shock**



CAUTION: TO REDUCE THE RISK OF ELECTRIC SHOCK, DO NOT REMOVE THE COVER RACK. THERE ARE NO USER SERVICEABLE PARTS INSIDE REFER SERVICE TO YOUR AUTHORIZED American Audio DEALER.



The lightning flash with an arrow triangular symbol is intended to alert the user to the presence of non insulated "dangerous voltage" within the products enclosure, and may be of sufficient magnitude to constitute a risk of electric shock.



The exclamation point triangular symbol is intended to alert the user to the presence of important operating and maintenance (servicing) instructions in the user manual accompanying the Media Controller.

CAUTION

TO PREVENT ELECTRIC SHOCK DO NOT USE THIS (POLARIZED) PLUG WITH AN EXTENSION CORD, RECEPTACLE OR OTHER OUTLET UNLESS THE BLADES CAN BE CAREFULLY INSERTED TO PREVENT BLADE EXPOSURE

CAUTION:

USE OF CONTROLS OR ADJUSTMENTS OTHER THAN THOSE SPECIFIED HEREIN MAY RESULT IN HAZARDOUS RADIATION EXPOSURE

THE Media Controller SHOULD NOT BE ADJUSTED OR REPAIRED BY ANYONE EXCEPT PROPERLY QUALIFIED SERVICE PERSONNEL.

NOTE:

This unit may cause interference to radio and television reception.

Please carefully read and understand the instructions in this manual thoroughly before attempting to operate this unit. These instructions contain important safety information regarding the use and maintenance of this unit. Take special care to follow all warning symbols and labels both on the unit and printed in this manual. Also, Please keep this manual with the unit, for future reference.

CAUTION: TO PREVENT ELECTRIC SHOCK DO NOT USE THIS (POLARIZED) PLUG WITH AN EXTENSION CORD, RECEPTACLE, OR OTHER TYPE OF ELECTRICAL OUTLET UNLESS THE WIDE BLADES CAN BE CAREFULLY INSERTED INTO A MATCHING WIDE SLOT.

ATTENTION: POUR PREVENIR LES CHOCS ELECTRIQUES NE PAS UTILISER CETTE FICHE POLARISEE AVEC UN PROLONGATEUR, UNE PRISE DE COURANT OU UNE AUTRE SORTIE DE COURANT, SAUF SI LES LAMES PEUVENT ETRE INSEREES A FOND SANS EN LAISSER AUCUNE PARTIE A DECOUVERT.

ELECTRICAL SAFETY PRECAUTIONS

ELECTRICAL PRECAUTIONS



The lightning flash with arrowhead symbol, within an equilateral triangle, is intended to alert the user to the presence of uninsulated "dangerous voltage" within the product's enclosure that may be of sufficient magnitude to constitute a risk of electric shock to persons.

CAUTION
RISK OF ELECTRIC SHOCK
DO NOT OPEN

CAUTION: TO REDUCE THE RISK OF ELECTRIC SHOCK, DO NOT REMOVE THE COVER (OR BACK). THERE ARE NO USER SERVICEABLE PARTS INSIDE. REFER SERVICE TO YOUR AUTHORIZED AMERICAN AUDIO® SERVICE TECHNICIAN.



The exclamation point within an equilateral triangle is intended to alert the user to the presence of important operating and maintenance (servicing) instructions in the literature accompanying the appliance.

IMPORTANT SAFETY INSTRUCTIONS

READ INSTRUCTIONS — All the safety and operating instructions should be read before the product is operated.

RETAIN INSTRUCTIONS — The safety and operating instructions should be retained for future reference.

HEED WARNINGS — All warnings on the product and in the operating instructions should be adhered to.

FOLLOW INSTRUCTIONS — All operating and use instructions should be followed.

CLEANING — The product should be cleaned only with a polishing cloth or a soft dry cloth. Never clean with furniture wax, benzene, insecticides or other volatile liquids since they may corrode the cabinet.

ATTACHMENTS — Do not use attachments not recommended by the product manufacturer as they may cause hazards.

WATER AND MOISTURE — Do not use this product near water — for example, near a bathtub, wash bowl, kitchen sink, or laundry tub; in a wet basement; or near a swimming pool; and the like.

ACCESSORIES — Do not place this product on an unstable cart, stand, tripod, bracket, or table. The product may fall, causing serious injury to a child or adult, and serious damage to the product. Use only with a cart, stand, tripod, bracket, or table recommended by the manufacturer, or sold with the product. Any mounting of the product should follow the manufacturer's instructions, and should use a mounting accessory recommended by the manufacturer.

CART — A product and cart combination should be moved with care. Quick stops, excessive force, and uneven surfaces may cause the product and cart combination to overturn.



VENTILATION — Slots and openings in the cabinet are provided for ventilation and to ensure reliable operation of the product and to protect it from overheating, and these openings must not be blocked or covered. The openings should never be blocked by placing the product on a bed, sofa, rug, or other similar surface. This product should not be placed in a built-in installation such as a bookcase or rack unless proper ventilation is provided or the manufacturer's instructions have been adhered to.

POWER SOURCES — This product should be operated only from the type of power source indicated on the marking label. If you are not sure of the type of power supply to your home, consult your product dealer or local power company.

LOCATION — The appliance should be installed in a stable location.

NONUSE PERIODS — The power cord of the appliance should be unplugged from the outlet when left unused for a long period of time.

GROUNDING OR POLARIZATION

- If this product is equipped with a polarized alternating current line plug (a plug having one blade wider than the other), it will fit into the outlet only one way. This is a safety feature. If you are unable to insert the plug fully into the outlet, try reversing the plug. If the plug should still fail to fit, contact your electrician to replace your obsolete outlet. Do not defeat the safety purpose of the polarized plug.

- If this product is equipped with a three-wire grounding type plug, a plug having a third (grounding) pin, it will only fit into a grounding type power outlet. This is a safety feature. If you are unable to insert the plug into the outlet, contact your electrician to replace your obsolete outlet. Do not defeat the safety purpose of the grounding type plug.

POWER-CORD PROTECTION - Power-supply cords should be routed so that they are not likely to be walked on or pinched by items placed upon or against them, paying particular attention to cords at plugs, convenience receptacles, and the point where they exit from the product.

OUTDOOR ANTENNA GROUNDING — If an outside antenna or cable system is connected to the product, be sure the antenna or cable system is grounded so as to provide some protection against voltage surges and built-up static charges. Article 810 of the National Electrical Code, ANSI/NFPA 70, provides information with regard to proper grounding of the mast and supporting structure, grounding of the lead-in wire to an antenna discharge unit, size of grounding conductors, location of antenna-discharge unit, connection to grounding electrodes, and requirements for the grounding electrode. See Figure A.

LIGHTNING — For added protection for this product during a lightning storm, or when it is left unattended and unused for long periods of time, unplug it from the wall outlet and disconnect the antenna or cable system. This will prevent damage to the product due to lightning and power-line surges.

POWER LINES — An outside antenna system should not be located in the vicinity of overhead power lines or other electric light or power circuits, or where it can fall into such power lines or circuits. When installing an outside antenna system, extreme care should be taken to keep from touching such power lines or circuits as contact with them might be fatal.

OVERLOADING — Do not overload wall outlets, extension cords, or integral convenience receptacles as this can result in a risk of fire or electric shock.

OBJECT AND LIQUID ENTRY - Never push objects of any kind into this product through openings as they may touch dangerous voltage points or short-out parts that could result in a fire or electric shock. Never spill liquid of any kind on the product.

SERVICING — Do not attempt to service this product yourself as opening or removing covers may expose you to dangerous voltage or other hazards. Refer all servicing to qualified service personnel.

DAMAGE REQUIRING SERVICE - Unplug this product from the wall outlet and refer servicing to qualified service personnel under the following conditions:

- When the power-supply cord or plug is damaged.
- If liquid has been spilled, or objects have fallen into the product.
- If the product has been exposed to rain or water.
- If the product does not operate normally by following the operating instructions. Adjust only those controls that are covered by the operating instructions as an improper adjustment of other controls may result in damage and will often require extensive work by a qualified technician to restore the product to its normal operation.
- If the product has been dropped or damaged in any way.
- When the product exhibits a distinct change in performance — this indicates a need for service.

REPLACEMENT PARTS — When replacement parts are required, be sure the service technician has used replacement parts specified by the manufacturer or have the same characteristics as the original part. Unauthorized substitutions may result in fire, electric shock, or other hazards.

SAFETY CHECK - Upon completion of any service or repairs to this product, ask the service technician to perform safety checks to determine that the product is in proper operating condition.

WALL OR CEILING MOUNTING — The product should not be mounted to a wall or ceiling.

HEAT — The product should be situated away from heat sources such as radiators, heat registers, stoves, or other products (including amplifiers) that produce heat.

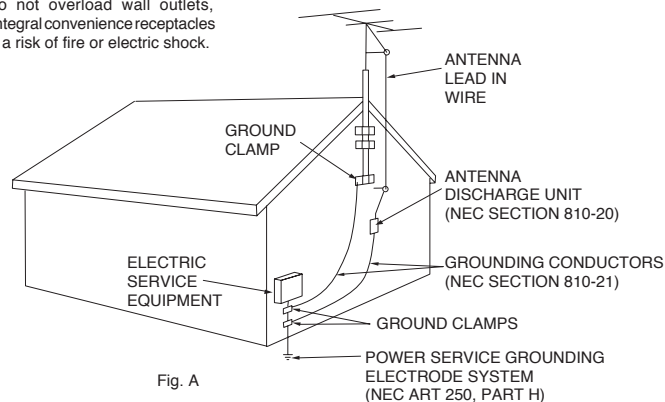


Fig. A

NEC — NATIONAL ELECTRICAL CODE

SAFETY INSTRUCTIONS

1. Read Instructions - All the safety and operating instructions should be read before the Player is operated. The safety and operating instructions should be saved for future reference.
2. Heed Warnings - All warnings on the Player and in the operating instructions should be adhered to.
3. Water and Moisture - The player should not be used near water - for example, near a bath tub, kitchen sink, laundry tub, in a wet basement or near a swimming pool, etc.
4. Ventilation - The Player should be situated so that its location or position does not interfere with its proper ventilation. For example, the player should not be situated on a bed, sofa, rug, or similar surface that may block the ventilation openings; or, placed in a built-in installation, such as a bookcase or cabinet that may impede the flow of air through the ventilation openings.
5. Heat - The player should be situated away from heat sources such as radiators, heat registers, stoves, or other appliances (including amplifiers) that produce heat.
6. Power Sources - The player should be connected to a power supply only of the type described in the operating instructions or as marked on the Player.
7. Servicing - The user should not attempt to service the Player beyond that described in the operating instructions. All other servicing should be referred to qualified service personnel. The Player should be serviced by qualified service personnel when:
 - A. The power-supply cord or the plug has been damaged.
 - B. Objects have fallen, or liquid has been spilled into the Player.
 - C. The Player has been exposed to rain or water.
 - D. The Player does not appear to operate normally or exhibits a marked change in performance.

The serial and model number for this unit is located on the rear panel. Please write down the numbers here and retain for future reference.

Model No. _____

Serial No. _____

Purchase Notes:

Date of Purchase _____

Dealer Name _____

Dealer Address _____

Dealer Phone _____

UNPACKING

Every VMS4™ has been thoroughly tested and has been shipped in perfect operating condition. Carefully check the shipping carton for damage that may have occurred during shipping. If the carton appears to be damaged, carefully inspect your player for any damage and be sure all equipment necessary to operate the player has arrived intact. In the event damage has been found or parts are missing, please contact our toll free customer support number for further instructions. Please do not return the player to your dealer without first contacting customer support.

INTRODUCTION

Introduction:

Congratulations and thank you for purchasing the American Audio® VMS4™ Media Controller. This controller is a representation of American Audio's continuing commitment to produce the best and highest quality audio products possible at an affordable price. Please read and understand this manual completely before attempting to operate your new player. This booklet contains important information concerning the proper and safe operation of your new controller.

Customer Support:

American Audio® provides a toll free customer support line, to provide set up help and answer any question should you encounter problems during your initial set up or operation. You may also visit us on the web at www.americanaudio.us for any comments or suggestions. Service Hours are Monday through Friday 9:00 a.m. to 5:30 p.m. Pacific Standard Time.

Voice: (800) 322-6337
Fax: (323) 582-2610
E-mail: support@americanaudio.us

To purchase parts online visit <http://parts.americandj.com>

Caution! There are no user serviceable parts inside this Media Controller. Do not attempt any repairs yourself, without being instructed to do so by an authorized American Audio service technician. Doing so will void your manufacturer's warranty. In the unlikely event your Media Controller may require service, please contact American Audio® customer support.

Do not discard the packing carton in the trash. Please recycle when ever possible.

SET-UP PRECAUTIONS

Please be sure to make any connections before plugging the player in to an electrical outlet. All fader and volume controls should be set to zero or minimum position, before the player is switched on. If the player has been exposed to drastic temperature fluctuation (e.g. after transportation), do not switch on the player immediately. The arising condensation of water might damage your device. Leave the device switched off until it has reached room temperature.

Operating Determinations:

- When installing this player, please make sure that the device is not exposed or will not be exposed to extreme heat, moisture or dust!
- Do not operate the player in extremely hot (more than 40°/104°F) or extremely cold (less than 5°C/40°F) surroundings.
- Keep the unit out of direct sunlight and away from heaters.
- Operate the player only after becoming familiar with its' functions. Do not permit operation by persons not qualified for operating the unit. Most damages are the result of unprofessional operation.

MAIN FEATURES

- 4 Sample Buttons Per Side
- MIDI Control via USB
- Built-In 4 In 4 Out/2 In 8 Out Sound Card
- Seamless Loop (uninterrupted loop playback)
- Full EQ on 4 MIDIALOG™ Channels & 2 Mic Channels
- Crossfader Assign, Curve, & Reverse
- Pitch Lock
- Pitch Bend
- 82 MIDI Controls
- USB/Analog Source Selects on Each MIDIALOG™ Channel
- 4-Channel Mixer w/ Volume Faders
- Master and Booth Outputs w/ L/R Balance
- X & Y Parameter Adjustments
- Master Volume Control
- Track & Deck Selectors
- Durable Touch Sensitive High-Res Jog Wheel
- Two Mic Combo Jacks
- Innofader Compatible
- High Life Touch Strips & Mouse Pad

SET-UP

1. Checking the Contents

Be sure your VMS4™ was shipped with the following:

- 1) VMS4™ Controller
- 2) Operating Instructions (This Booklet)
- 3) USB Cable
- 4) 5V Power Adapter
- 5) Virtual DJ Software
- 6) Warranty card

2. Installing the Units

- 1) Place your unit on a flat surface or mount it in a secure rack mount case.
- 2) Be sure the player is mounted in a well ventilated area where it will not be exposed to direct sunlight, high temperatures, or high humidity.
- 3) Try to place the unit as far as possible from TVs and tuners, as the unit may cause undesirable interference.

3. Connections

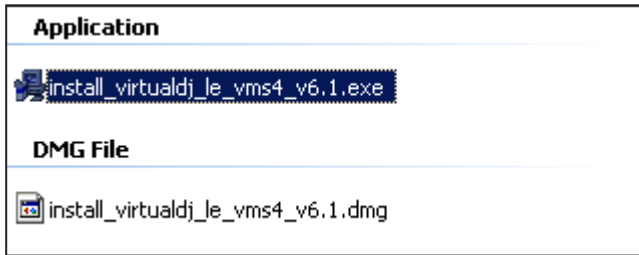
- 1) Be sure main power is connected last to prevent any electrical damage.
- 2) **AUDIO CONNECTIONS:** Use RCA or XLR cables to connect the VMS4™ outputs to powered speakers or an amplifier. Never connect this player's output to a mixers "phono" inputs.
- 3) **CONTROL JACK CONNECTIONS:** Use a 1/8" mono (not stereo) mini plug cable to connect your VMS4™ to a mini jack connection (A or B) on a compatible American Audio® or American DJ® "Fader Q Start" mixer. (This will enable the Fader "Q" Start function - See "Q" start control page 15).

CAUTION:

- **Be sure to use mono 1/8" control cables. Using other types of cable may result in unit damage.**
- **To avoid severe damage to the unit, be sure the power is off when making connections to the unit.**

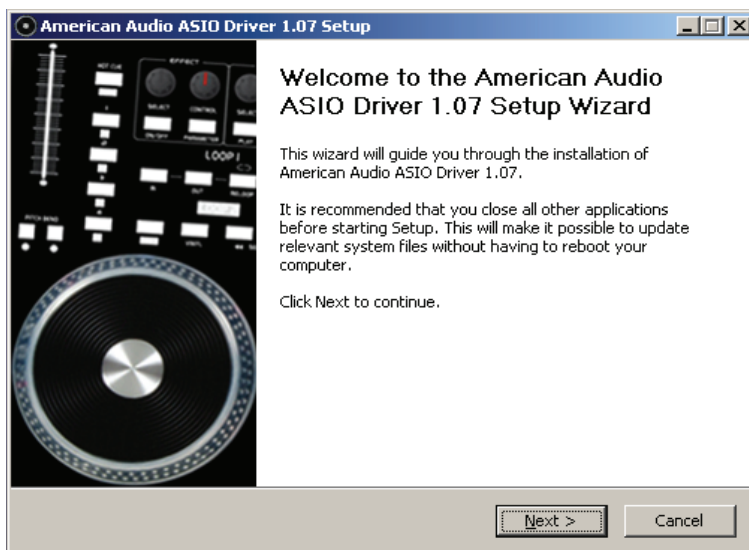
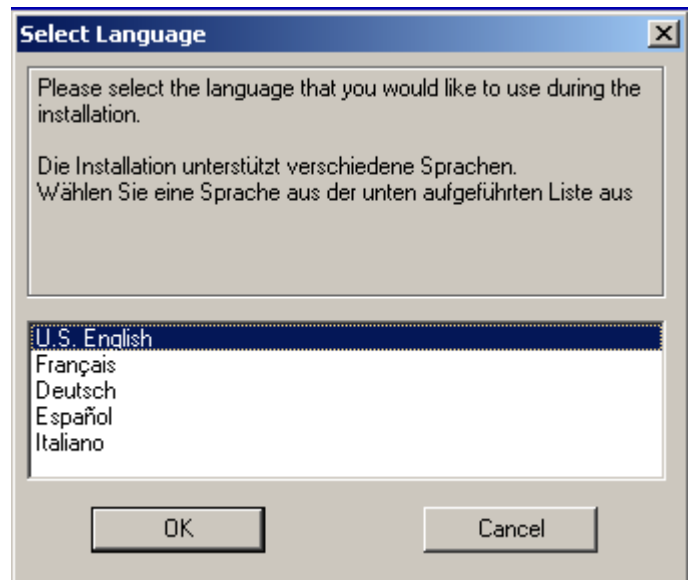
SOFTWARE & ASIO DRIVER INSTALLATION

Insert the disc into your computer cd drive and "click" on the CD icon.



Depending the typ of computer you are operating, choose the Exe file for PC or the DMG file for MAC.

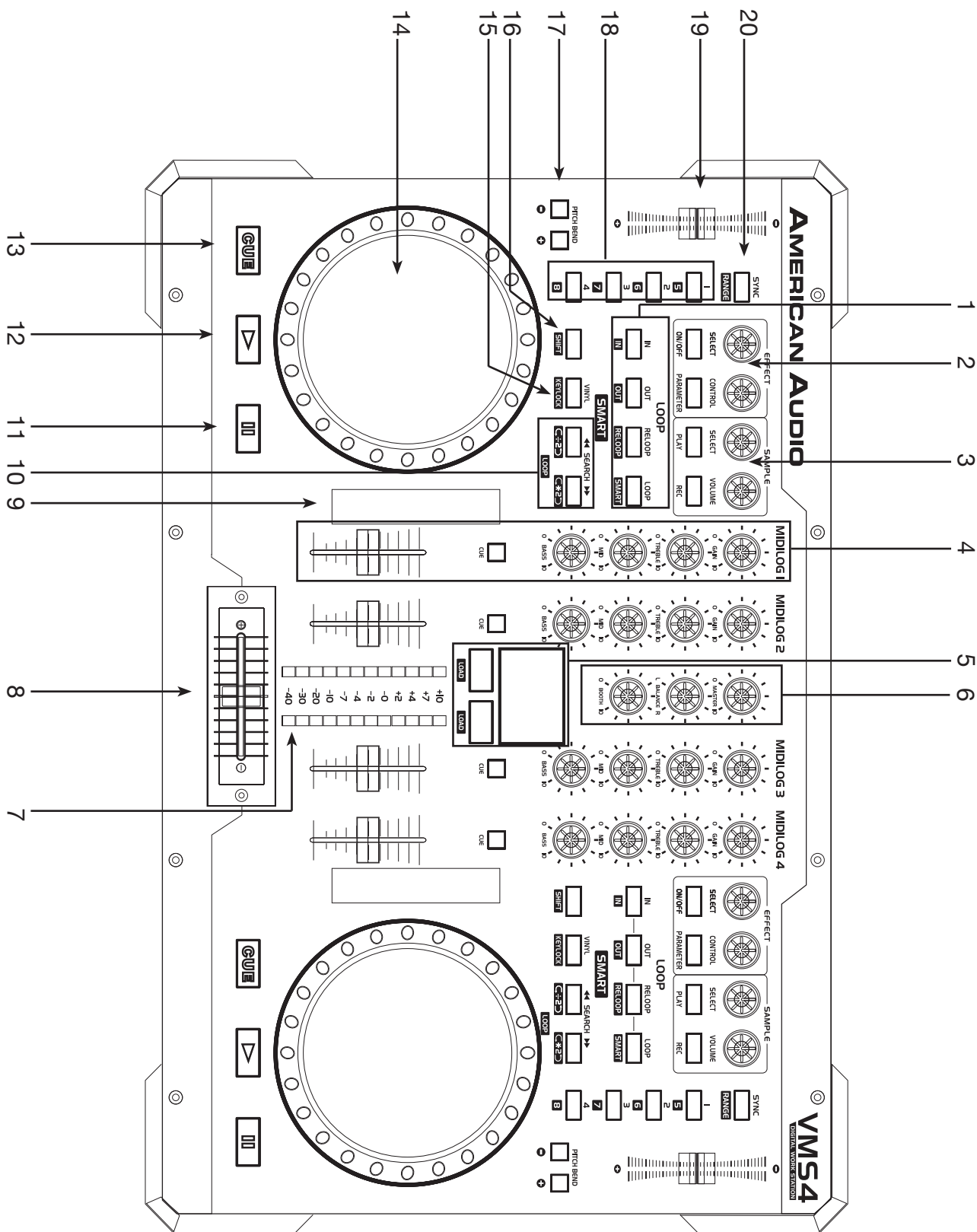
Choose your desired language and "click" OK. Read the following information and "click" Next. Follow the screen prompts to install the software.



The ASIO Driver installation will open during the Virtual DJ installation. PC users, follow the screen prompts for proper installation. Mac install is automatic after "clicking" on the DMG file.

GENERAL FUNCTIONS AND CONTROLS

Figure 1



GENERAL FUNCTIONS AND CONTROLS (Cont.)

A. PLAYER - FRONT (FIGURE 1)

1. IN, OUT, RELOOP, & LOOP BUTTONS

IN BUTTON - "CUE ON THE FLY" - This function allows you to set a CUE POINT without music interruption ("on the fly"). This button also sets the starting point of a seamless loop.

OUT BUTTON - This button is used to set the ending point of a loop. A loop is started by pressing the **IN BUTTON**, pressing the **OUT BUTTON** set the loop ending point. The loop will continue to play until the **OUT BUTTON** is pressed once again.

RELOOP BUTTON - If a SEAMLESS LOOP has been made, but the player is not actively in SEAMLESS LOOP mode (a loop is not playing), pressing the **RELOOP BUTTON** will instantly reactivate the SEAMLESS LOOP mode. To exit loop, press the **OUT BUTTON**.

2. EFFECT SECTION

SELECT ENCODER KNOB - Use this knob to scroll through the various effects.

CONTROL KNOB - Set the value of the selected effect parameter.

ON/OFF BUTTON - Toggle selected effect on and off. A lit LED will indicate the effect is on.

PARAMETER BUTTON - Press this button to toggle through the available effect parameters.

3. SAMPLE SECTION

SELECT ENCODER KNOB - Use this knob to scroll through samples.

VOLUME KNOB - Use this knob to set the volume of the selected sample.

PLAY BUTTON - Press this button to play the selected sample. Press this button plus the **SHIFT** button to loop a sample.

REC. BUTTON - Use this button to start and stop recording a select sample. Press this button plus the **SHIFT** button to save a loop to your selected sample.

4. MIDILOG™ MIXER SECTION

CHANNEL GAIN CONTROL - This adjustment is used to adjust the audio source signal input gain for a channel. Never use the gain control to adjust a channels output volume. Setting the gain level properly will ensure a clean output signal. An improper gain level adjustment will send a distorted signal throughout the entire audio line which may damage speakers and amplifiers. To properly set a channels gain level control:

1. Be sure the **MASTER VOLUME CONTROL** is set to level 4.
2. Set the **CHANNEL FADER** to level 8.
3. Begin playback on an audio source connected to the channel you are adjusting.
4. Use the Gain Control to adjust an average output volume of +4 dB.
5. Repeat this step for all channels

CHANNEL TREBLE CONTROL - This knob is used to adjust the treble levels of a channel allowing for a maximum treble gain of +6dB or maximum decrease of -100dB. Turning the knob in a counter-clockwise direction will decrease the amount of treble applied to a channel signal, turning the knob in a clockwise direction will increase the amount of treble applied to a channel signal.

CHANNEL MIDRANGE CONTROL - This knob is used to adjust the midrange levels of a channel allowing for a maximum midrange gain of +6dB or maximum decrease of -100dB. Turning the knob in a counter-clockwise direction will decrease the amount of midrange applied to a channel signal, turning the knob in a clockwise direction will increase the amount of midrange applied to a channel signal.

GENERAL FUNCTIONS AND CONTROLS (Cont.)

CHANNEL BASS CONTROL - This knob is used to adjust the low frequency levels of a channel allowing for a maximum bass gain of +6dB or maximum signal decrease of -100dB. Turning the knob in a counter-clockwise direction will decrease the amount of bass applied to a channel signal, turning the knob in a clockwise direction will increase the amount of bass applied to a channel signal.

CUE BUTTON - These buttons are used to activate a channels "CUE" mode. The CUE LED will glow when a channels cue mode is activated. The Cue function sends a channels incoming signal to the headphones. The cue level is adjusted by the *CUE LEVEL KNOB*.

NOTE: The MIDILOG™ cue button has a additional function. During power-on, hold this button down to toggle the post EQ mode on and off. For more on this please refer to the Virtual DJ Setup near the end of this manual.

CHANNEL FADER - These faders are used to control the output signal of any source assigned to its particular player.

5. MOUSE PAD - This will function as a normal mouse pad on laptop would function. The LOAD buttons underneath are the left and right click buttons. When any of the SHIFT buttons are active (LED lit) the mouse pad is disabled and is able to send MIDI messages. Adjustments to the mouse pad can be made in the Control Panel (PC) or Utilities (Mac).

6. MASTER VOLUME, BALANCE, & BOOTH CONTROLS

MASTER VOLUME CONTROL - This knob is used to control the master output level. To avoid distorted output try to maintain an average output signal level no greater than +4dB. To avoid speaker damage that may be caused by excessive volume, be sure this knob is always set to zero (completely down) before turning the unit on.

MASTER OUTPUT BALANCE CONTROL - This knob is used to control the pan, adjust how much of the signal is sent to the left and right output level. For true stereo imaging, maintain the knob in the 12 o' clock position.

BOOTH LEVEL - This knob is used to adjusts the monitor volume output level. Turn the knob in a clockwise direction to increase the monitor volume.

7. CHANNEL VOLUME LEVEL INDICATORS - The LED indicators that run along each channels EQ section are used to measure incoming signal levels. Use these indicator to visually maintain an average signal output of +4dB. A consistent average output level of +4dB will produce a clean output signal. When no CUE sources are selected, these indicate the volume level on the MASTER OUTPUT. When one or more CUE sources are selected, these indicate the volume level on all of the CUE sources combined. At power-on, these indicate the VMS4 firmware version. If the left side lights up 1 LED, and the right side lights up 3 LEDs, the firmare version is 1.3.

8. CROSSFADER - This fader is used to blend the output signals of channels A and B together. When the fader is in the full left position (channel A), the output signal of channel A will be controlled by the master volume level. The same fundamentals will apply for channel B. Sliding the fader from one position to another will vary the output signals of channels A and B respectively. When the crossfader is set in the center position, the output signals of both the channels A and channels B will be even.

9. TOUCH STRIPS - The touch strips are user assignnable to numerous actions, e.g. effects control, song scrolling, browser scroll, etc.

10. SEARCH BUTTONS -

 This search button allows you to quickly scan backwards through a track.

 This search button allows you to quickly scan forwards through a track.

GENERAL FUNCTIONS AND CONTROLS (Cont.)

11. PAUSE BUTTON - Press this button to PAUSE what ever music source is playing.

12. PLAY BUTTON - Press this button to PLAY your desired music source.

13. CUE - Pressing the **CUE** button during playback immediately pauses playback and returns the track to the last set cue point. The red CUE LED will glow when the unit is in cue mode. The LED will also flash every time a new CUE POINT is set. The CUE button can be held down to momentarily play the track. When you release the CUE button it instantly returns to the CUE POINT. You can also tap the CUE button to create a BOP EFFECT.

14. JOG WHEEL - This wheel has three functions;

Attention: Make sure that *NOTHING* is touch or resting on the jog wheels when you power on the VMS4.

A. The wheel works as a pitch bend during Playback. Turning the wheel clockwise can increase the pitch percentage up to 100%, and turning the wheel in the counter-clockwise direction can decrease the pitch percentage down to -100%. The pitch bend will be determined on how long you turn the jog wheel continuously.

B. The jog wheel also controls the scratch effect, when the scratch effect is active.

C. The jog wheel can also serve as frame search.

Note: The inside of the wheel is touch sensitive and the outside edge of the wheel is not. Example: You can scratch by touching the inside or center of the wheel, and pitch bend when you touch the outside edge of the wheel.

15. VINYL - Pushing this button activates VINYL mode.

16. SHIFT - Enables secondary MIDI command on buttons, jog wheel, and MIDI functions on mouse pad. Example: Press SHIFT and VINYL to activate Keylock.

17. (-) PITCH BEND BUTTON - The (-) pitch bend function creates a momentary “Slow Down” in the BPM’s (Beats per minute) while it is playing. This will allow you to match the beats between two playing audio sources. Remember, this is a momentary function. When you remove your finger from the pitch button, the BPM’s will automatically return to *PITCH SLIDER'S* pitch value Holding down this button will give a maximum of -100% pitch. Use this function to slow to another playing music source. Be sure to notice that this function is a momentary pitch adjustment, for a more precise adjustment use the *PITCH SLIDER (7)* to match the BPM’s with another playing music source.

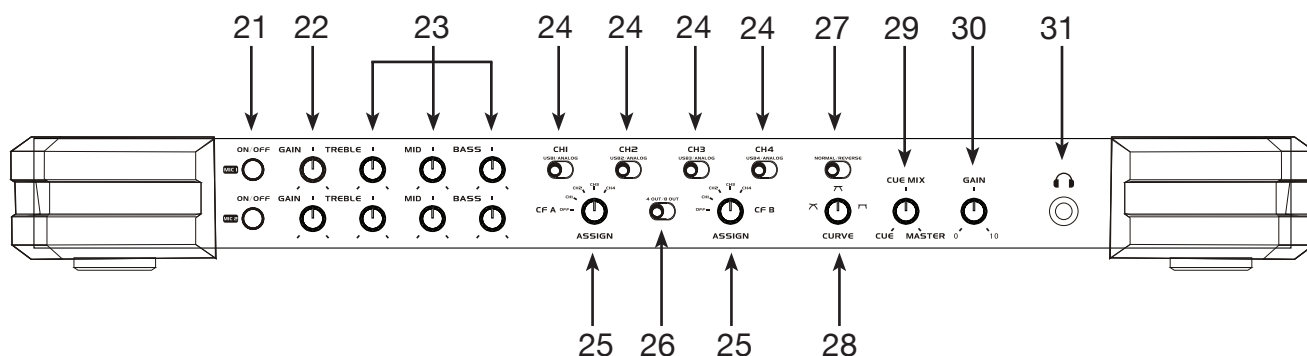
(+) PITCH BEND BUTTON - The (+) pitch bend function creates a momentary “BUMP” in the BPM’s (Beats per minute) while it is playing. This will allow you to match the beats between two playing audio sources. Remember, this is a momentary function. When you remove your finger from this button, the BPM’s will automatically return to the *PITCH SLIDER'S* selected pitch. Holding down this button will give a maximum of +100% pitch.

18. BANK BUTTONS - These buttons are used to store either four (4) cue points or four (4) samples. Each Bank Button can store either a sample or a cue point.

19. PITCH SLIDER - This slider is used to adjust the playback pitch percentage. The slider is a set adjustment and will remain set until the pitch slider is moved or the pitch function has been turned off.

20. SYNC BUTTON - Use this button to set this deck to master and auto sync and the other deck's tempo to master.

FRONT PANEL - GENERAL FUNCTIONS AND CONTROLS



FRONT PANEL -

MIC SECTION (21-23) - the VMS4 is equipped with 2 microphone inputs, easy to use, no ASIO routing required. Each microphone channel has an independent on/off switch, gain control, and 3 band EQ.

21. MIC ON/OFF - Turns the corresponding microphone on/off. When you Mic is on the button will be backlit by a red LED.

22. MIC GAIN CONTROL - Increase or decrease the microphone output.

23. MIC EQ - Adjust the treble, mid, and bass on the corresponding Mic inputs.

MIXER CONTROLS (24-25) - the VMS4 can be used as a MIDI control, a stand alone mixer, or combination giving you maximum control of your music collection whether it be on vinyl, digital CD's or Computer DJ software (Virtual DJ included).

24. USB/ANALOG SWITCH - These will switch the corresponding Channel from USB audio stream or analog audio input. USB will route the software assigned ASIO audio channel thru the corresponding MIDILOG™ channel. Analog will route the analog audio input from the rear panel thru the corresponding MIDILOG™ channel.

25. CF ASSIGN A & B - CF Assign A will select the desired channel to the left side of the crossfader.* CF Assign B will select the desired channel to the right side of the crossfader.*

* Normal Mode: This will be the opposite when the crossfader is reversed.

* The CROSSFADER will only effect a channel's volume when the channel is assigned.

Interface Mode (26-28) - the VMS4 can be used as a MIDI control, a stand alone mixer, or combination giving you maximum control of your music collection whether it be on vinyl, digital CD's or Computer DJ software (Virtual DJ included).

26. 4 OUT: 4 OUT X 4 IN USB - Sets MIDILOG™ channels 2 & 3 to receive audio from software with ASIO outputs and sends audio or control tones from the channel 2 & 3 RCA inputs to your software ASIO inputs.

8 OUT: 8 OUT X 2 IN USB - Sets 4 MIDILOG™ channels to receive audio from software with ASIO outputs and sends the audio from the master output via USB for recording.

27. NORMAL/REVERSE - Switches the crossfader from normal to reverse mode. In reverse mode the CF A assignments will be on the right of the crossfader and the CF B on the left.

28. CURVE KNOB - This knob will adjust the curve of the crossfader from mix curve, dipped curve, to scratch curve.

FRONT PANEL - GENERAL FUNCTIONS AND CONTROLS

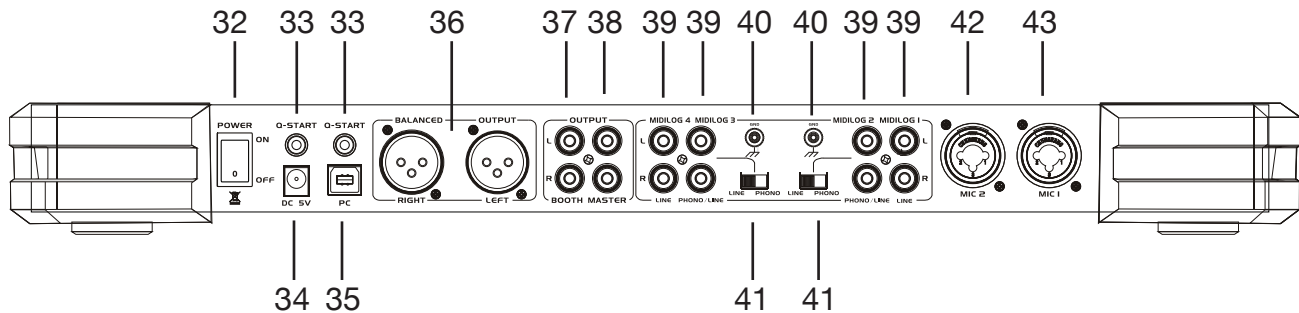
Headphone Controls (28-30)

29. CUE/MASTER KNOB - Sets the headphone output from Cue or Master. When set to the Cue position, the headphones will receive the signal from any and all channels with the Cue button activated. When set to the Master position, the headphones will receive the pre fader master output signal, allowing you to cue the master at any output level and even if it is fully off. Any knob settings in between Cue and Master will blend the Cue and Master signals.

30. HEADPHONE GAIN - Will set the output level of the headphones.

31. HEADPHONE JACK - Connect your headphones to this jack. The headphone signal is controlled by the controls described previously.

REAR PANEL - GENERAL FUNCTIONS AND CONTROLS



REAR PANEL -

32. POWER SWITCH - This switch will turn the VMS4 on/off.

Attention: Make sure that *NOTHING* is touch or resting on the jog wheels when you power on the VMS4.

OUTPUTS (33-38)

33. Q-START - These 1/8 jacks remotely start playback in Q-Start equipped or compatible CD players. The start and stop correspond to the audio start and stop of the corresponding side of the crossfader.

34. POWER SUPPLY - The power supply is not required, but the LED indicators on the mixer knobs will be dim, headphones may be underpowered, and there is an increased chance of audio distortion.

35. USB PORT - Connect to your PC for MIDI interface and USB interface (audio in and outs).

36. XLR BALANCED OUTPUTS - The VMS4 has RCA (unbalanced) and XLR (balanced) connections to connect to amplifiers or connect directly to powered speakers. It is highly recommended that the XLR outs be used for any connection of more than 20ft. Never connect the XLR outs and the RCA outs at the same time, this may affect your output. To set your desired volume use the Master volume knob.

37. BOOTH OUTPUTS - The VMS4 offers a secondary output usually used to monitor your mix or to route to an outboard recording device. This output has independent volume control "Booth" knob.

38. RCA OUTPUTS - The VMS4 has RCA (unbalanced) and XLR (balanced) connections to connect to amplifiers or connect directly to powered speakers. It is highly recommended that the XLR outs be used for any connection of more than 20ft. Never connect the XLR outs and the RCA outs at the same time, this may affect your output. To set your desired volume use the Master volume knob.

INPUTS (39, 42-43)

39. RCA INPUTS - RCA connectors for CD, turntable, and other analog inputs.

MIDILOG™ 1: Line level RCA input use to control CD players, Mp3 players, or other line level sources.

MIDILOG™ 2: Phono/line level RCA input use to connect turntables, CD players, Mp3 players, or other line level sources. The type of input must directly reflect the selected mode of the *LINE/PHONO SELECTOR SWITCH*. Turntables equipped with MM pickup cartridge (All DJ turntable use MM pick-up cartridges) may be connected to these jacks as long as the *LINE/PHONO SELECTOR SWITCH* is in the "PHONO" position. CD players, Mp3 players,

REAR PANEL - GENERAL FUNCTIONS AND CONTROLS

and other line level instruments may only be connected to these jacks as long as the *LINE LEVEL SELECTOR SWITCH* is in the "LINE" position.

MIDILOG™ 3: Phono/line level RCA input use to connect turntables, CD players, Mp3 players, or other line level sources. The type of input must directly reflect the selected mode of the *LINE/PHONO SELECTOR SWITCH*. Turntables equipped with MM pickup cartridge (All DJ turntable use MM pick-up cartridges) may be connected to these jacks as long as the *LINE/PHONO SELECTOR SWITCH* is in the "PHONO" position. CD players, Mp3 players, and other line level instruments may only be connected to these jacks as long as the *LINE LEVEL SELECTOR SWITCH* is in the "LINE" position.

MIDILOG™ 4: Line level RCA input use to control CD players, Mp3 players, or other line level sources.

40. PHONO GROUND - Be sure to connect turntable ground leads to either or both of the two available ground terminals. This will reduce the humming and popping noises associated with magnetic phono cartridges.

41. LINE/PHONO SELECTOR SWITCH - These switches are used to change the voltage line levels of there respected Line/Phono RCA inputs jacks. When connecting turntables with magnetic cartridges to these jacks be sure the corresponding switch is in the "PHONO" position, and when using line level input devices be sure this switch is in the "LINE" position.

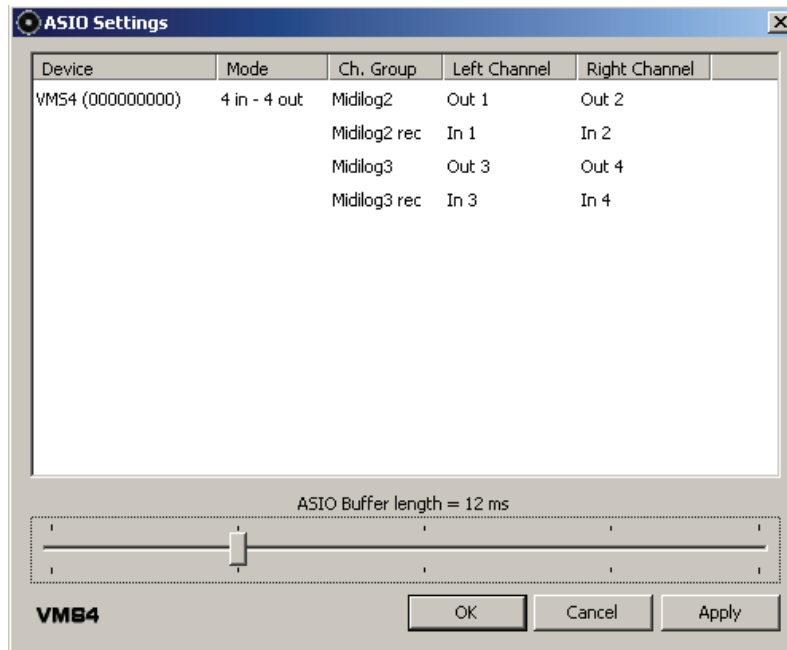
42. MIC 2 - XLR and 1/4" combo jack for microphone connection. The volume output level for this microphone will be controlled by its own respective volume knob.

43. MIC 1 - XLR and 1/4" combo jack for microphone connection. The volume output level for this microphone will be controlled by its own respective volume knob.

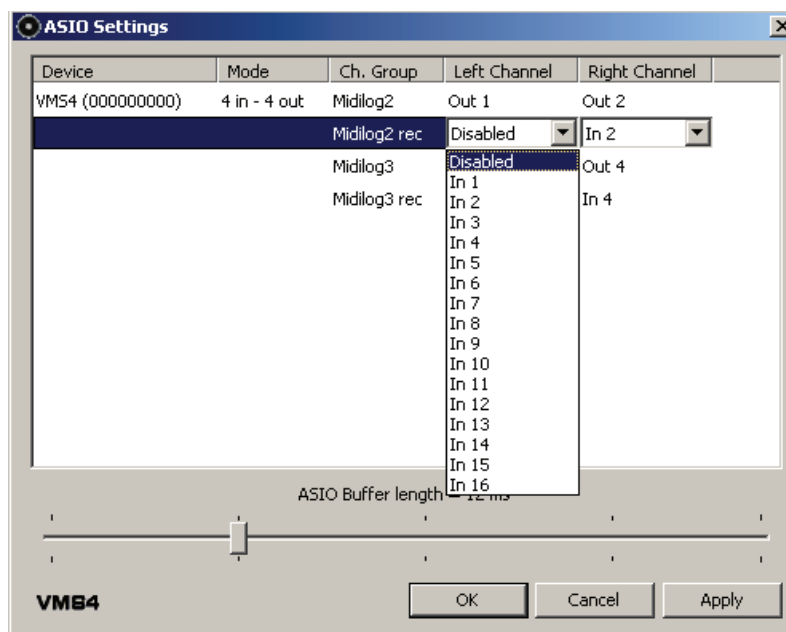
AUDIO INTERFACE MODE

Audio Interface Mode:

4 Out Mode: The VMS4 can act like a 4x4 audio interface. Your USB audio is routed through the VMS4's MIDIALOG Ch. #2 and #3 inputs. If you wish to route the inputs via USB for software play through or Time Code Control, set your desired VMS4 Channel to the USB setting and the channels' *LINE/PHONO SELECTOR SWITCH (41)* to the correct setting.

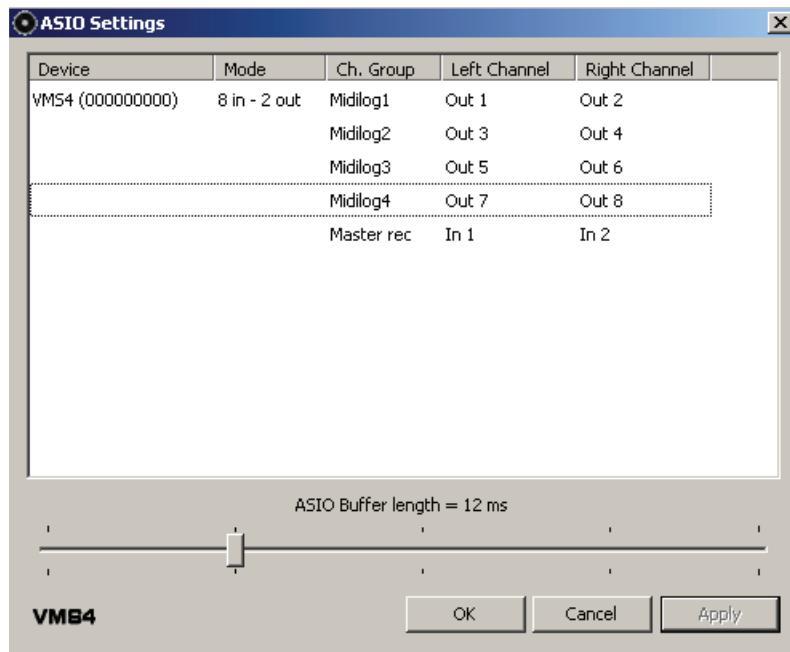


Note: For the best performance, if no inputs are in use, set the Inputs to Disabled by "clicking" on the ASIO Driver Interface. Your inputs and outputs can be set to channels 1-16, but your software may not support the ASIO stream of the channel numbers. Check the software manual to make sure it does.



AUDIO INTERFACE MODE

8 Out Mode: This mode supports 4 USB audio inputs. Perfect for using it with software that has 3-4 decks. This will also route your master output via USB for recording USB audio or analog inputs.



MIDI LATENCY MODES

There are two MIDI Latency modes; Normal mode and Turbo mode. Normal mode has MIDI Latency of 10 milliseconds, this is the default mode. Turbo mode has a MIDI latency of 1 millisecond.

To set the VMS4 to "Turbo mode:

Before powering on press and hold the CUE, PLAY, and PAUSE buttons on the *LEFT* side.

Hold the buttons until *CHANNEL VOLUME LEVEL INDICATORS (7)* light up with the code version.

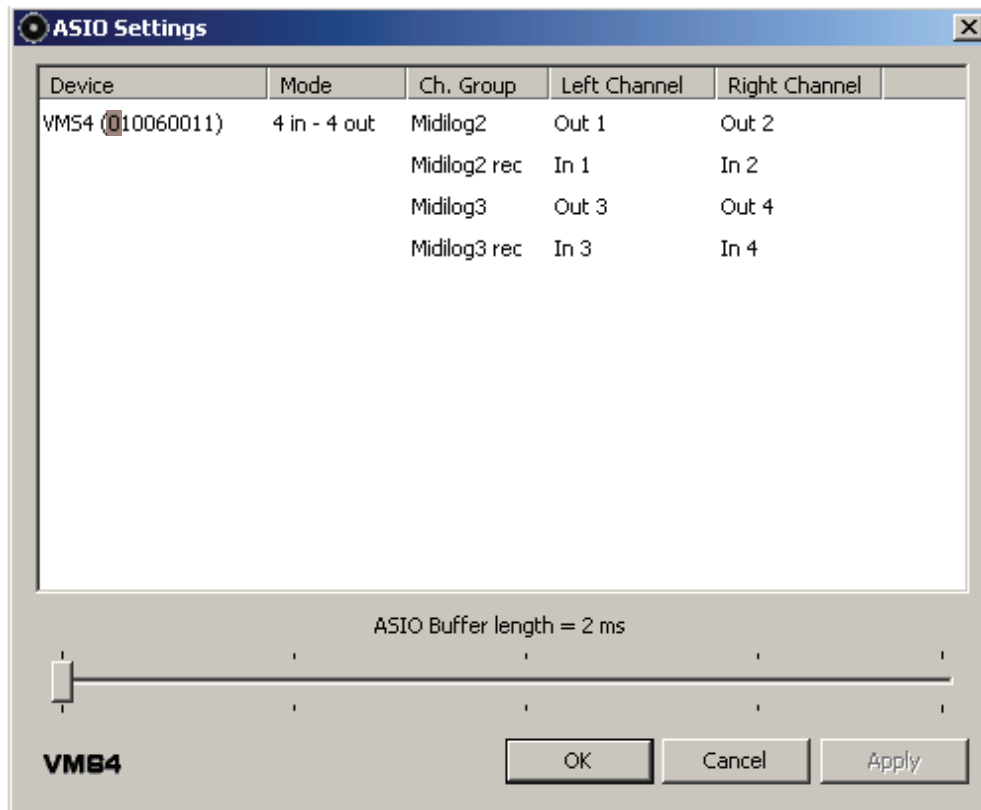
See page 11 *CHANNEL VOLUME LEVEL INDICATORS* for information on the code version.

It is recommended that you use the default mode if your computer does not meet the recommended system requirements or are using Windows Vista. It is also strongly recommended that you close all programs running in the background, this will free up RAM and minimize CPU process. If you are using a laptop, turn off your wireless card if possible since this may cause sound problems. Allow your computers hard drive to have at least 20% free space.

EQ MODES

The EQ for the USB audio can work in two different modes, Pre & Post EQ. These EQ modes can work in both 4 out and 8 out interface modes that are described on pages 19-20.

In Pre EQ the USB audio signal is affected by the VMS4 EQ. Pre EQ is the default EQ. In Pre EQ mode the ASIO Driver will list the VMS4 device number, the first number in the sequence will be a "0". Please see the window below.

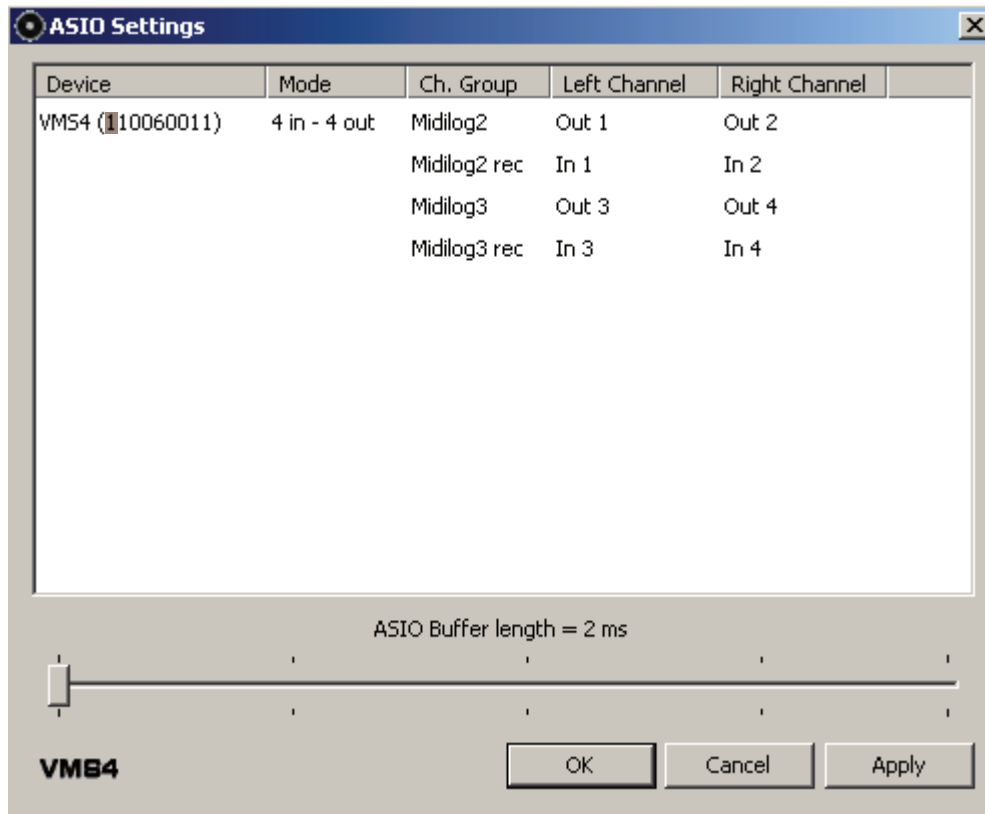


****Beware that mapping the MIDI on the EQ knobs in this mode will cause your audio to process the EQ from the software and VMS4 EQ.*

EQ MODES

Post EQ is for users who prefer using the EQ from their software. To toggle the post EQ mode on and off; before powering up the VMS4, press and hold the *PFL CUE (4)* on the 4th channel MIDILOG and then power "ON" the unit. Release the button, your computer may reinstall the VMS4 as a new device, please allow 10-20 seconds for the change to take place. Confirm the EQ change by checking the ASIO Driver configuration. The first number in the sequence will be a "1" in this mode. Please see the window below.

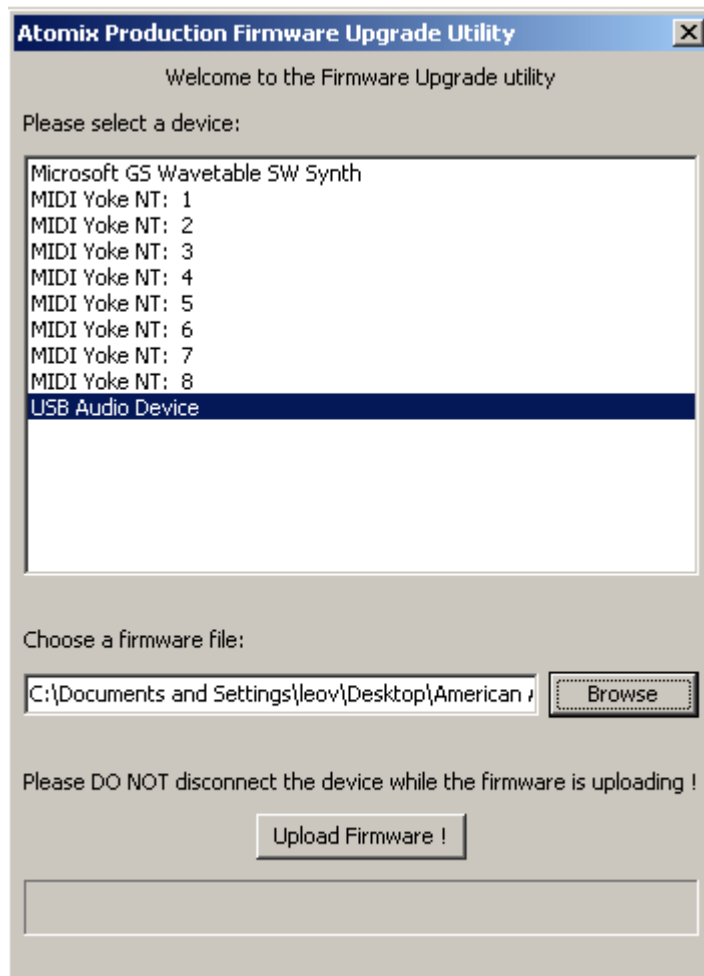
Make sure you are using software where you can map the MIDI from the EQ and that the EQ has been mapped when using this mode.



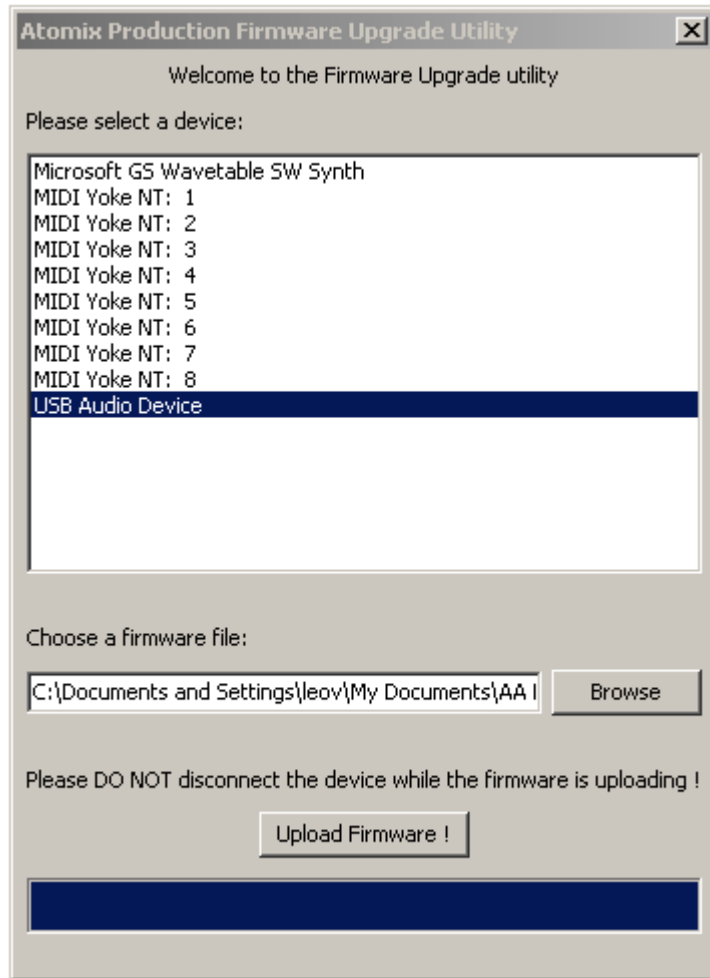
FIRMWARE UPDATE

The included version of Virtual DJ includes a Firmware update utility. It is necessary to install this. To update your VMS4:

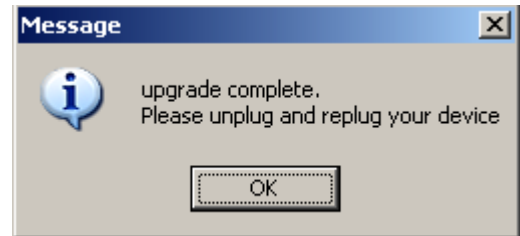
1. Please check your computer audio setting and ensure that the VMS4 is not set as a default playback, playback recording, or MIDI device. This will interfere with the update and software applications.
2. Click the start menu > All Programs > Virtual DJ > FIRMWARE Update.
3. Select the VMS4 or USB Audio Device (Windows XP). Load the update file by clicking browse and going to the file location.



FIRMWARE UPDATE



4. Wait until the bar is filled in completely and "Upgrade Complete" is displayed.

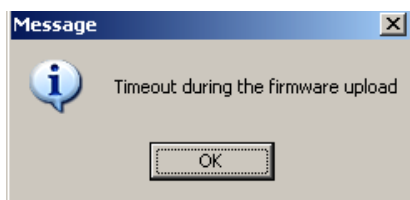


5. Unplug the USB and shut down the VMS4.

You may receive some Error windows like you see below.



Select proper device in device select window.

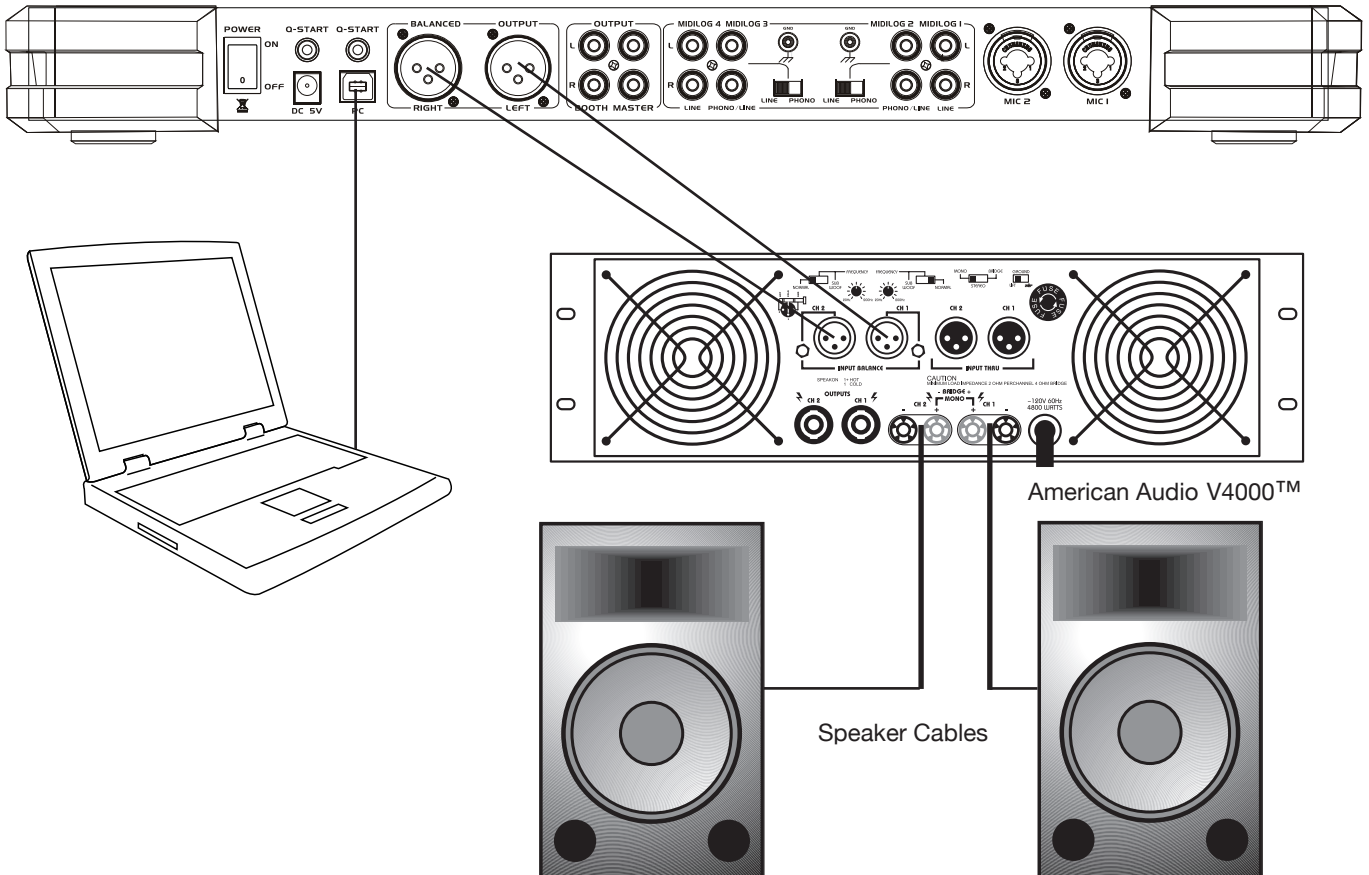
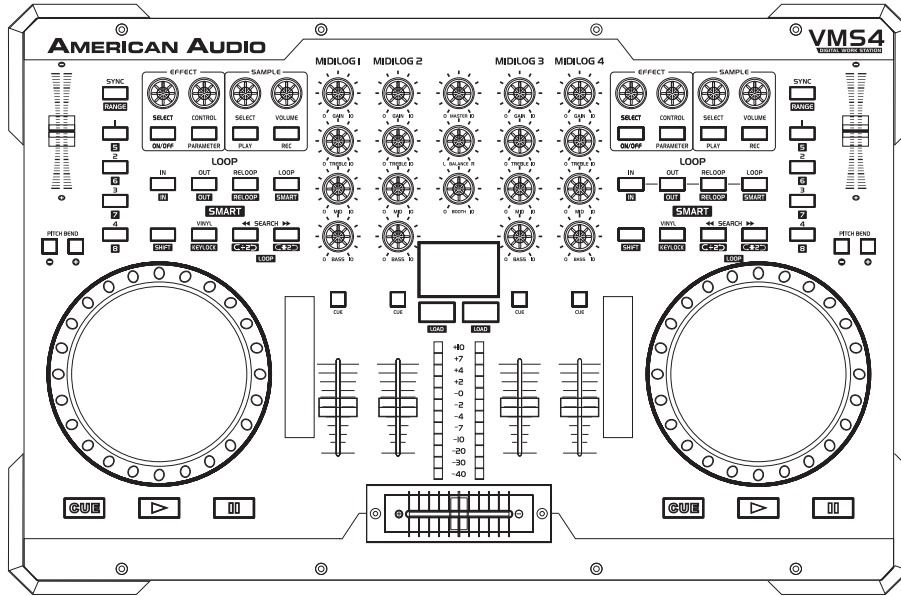


Please check your computer audio setting and ensure that the VMS4 is not set as a default playback, playback recording, or MIDI device. This will interfere with the update and software applications. Also, make sure that any software that uses MIDI or the Audio interface is closed.

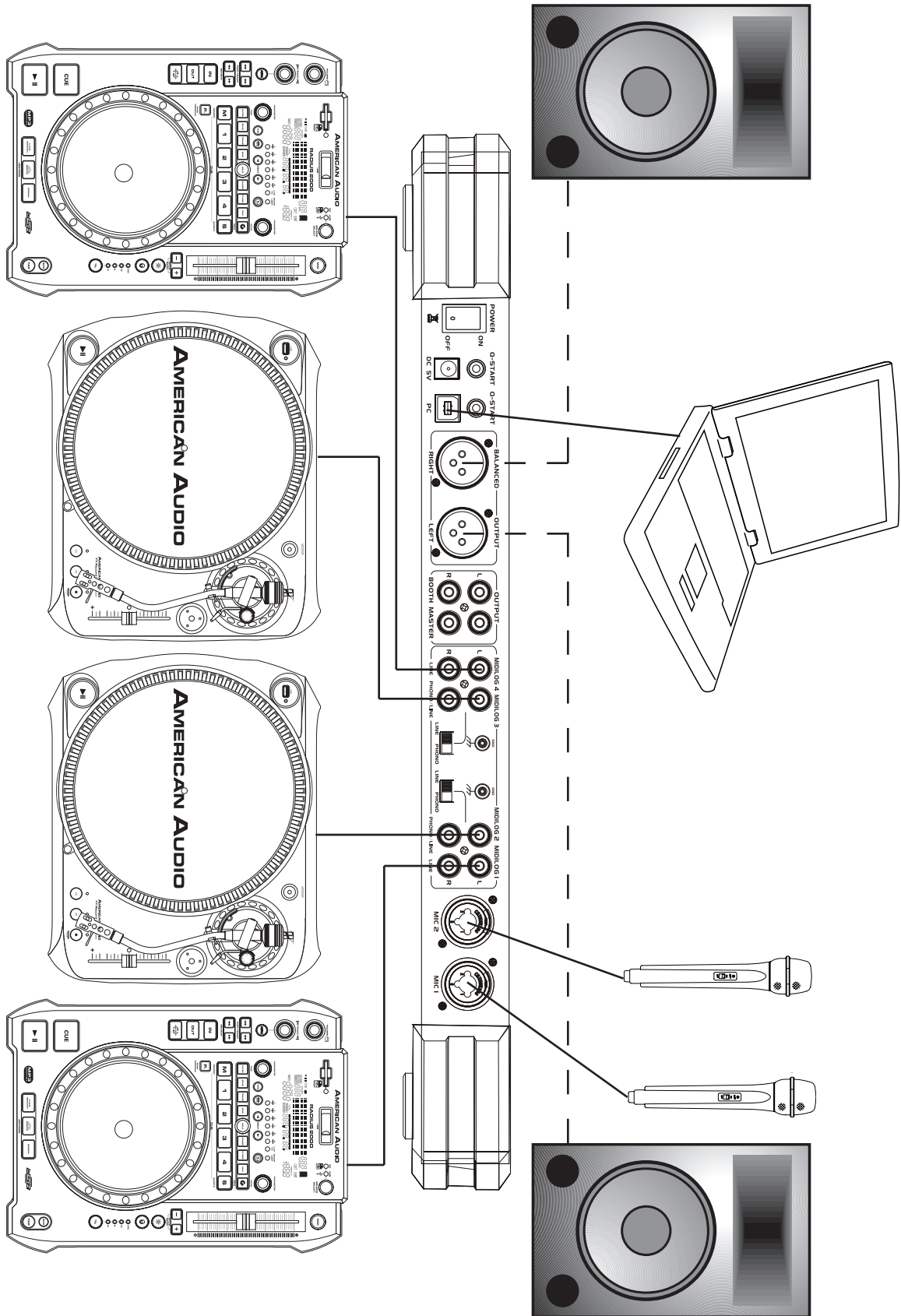
COMPUTER CONNECTION

1. CONNECTING THE VMS4 TO YOUR PC

Connect the VMS4 to your PC by using the USB ports located on the rear of the VMS4 and your PC. Connect the supplied USB cable to the USB port on the rear of the VMS4, and the other end connects to the USB port on your computer. **NOTE: Before connecting your VMS4 to your computer or laptop, we highly recommend that you install the provided software. The Virtual DJ version included with this product is specifically tailored to work with the VMS4 with no setup required. The setup of other non-factory authorized drivers and software is far more complex and in some instances not as reliable.**



SET UP



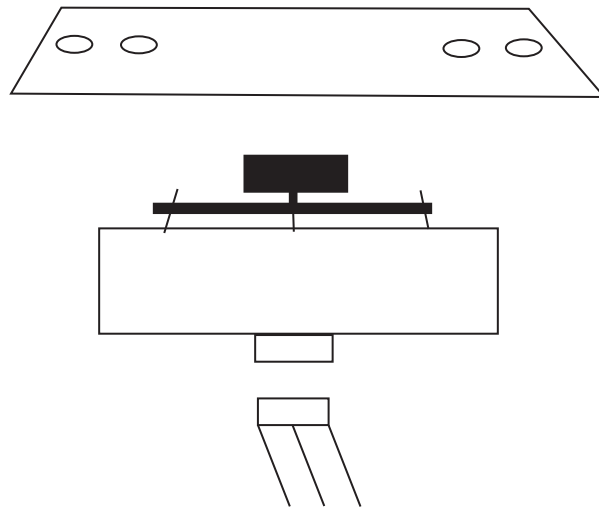
CLEANING

Due to fog residue, smoke, and dust, cleaning the mixer should be carried out periodically to residue build up.

1. Use normal glass cleaner and a soft cloth to wipe down the outside casing.
2. Use a cleaner specially designed for electronics to spray in and around the knobs and switch.
This will reduce small particle built up that can effect the proper operation of the mixer.
3. Cleaning should be carried out every 30-60 days to prevent heavy built up.
4. Always be sure to dry all parts completely before plugging the mixer in.

Cleaning frequency depends on the environment in which the mixer operates (i.e. smoke, fog residue, dust, dew).

CROSSFADER REPLACEMENT



The crossfader is “Hot Swapable” which means it may be replaced at any time, even when power is applied. Replace with American Audio VMS4 crossfader (part# Z-FF-8). If you wish to upgrade to an Innofader, please order the Innofader model which comes with the VMS4 plate cover to protect the Innofader from damage during handling of the VMS4. If you upgrade to the Innofader, please make sure the power is off before upgrading to limit the chance of damage to the Innofader and/or VMS4 during installation. Replacing with any other model fader may seriously damage your mixer.

Replacing the Crossfader:

1. Disconnect the mixers main power supply
2. Using a Phillips screw driver, unscrew the two outside screws on each side that hold the cross fader assembly in place.
3. Gently remove the crossfader assembly from its seated position. You may need to wiggle the crossfader slightly to remove it.
4. After removing the crossfader assembly, disconnect the ribbon cable that attaches the cross fader to the PC board. Grasp the crossfader by its base and pull the ribbon cable by its connector not the actual cables. The connector is designed to only fit one way, so don't worry about the connectors orientation.
5. Unscrew the two inner screws that connect the crossfader to the crossfader plate.
6. Connect the new crossfader to the ribbon cable and replace in reverse order.

WARRANTY

WARRANTY INFORMATION: The VMS4™ carries a ONE year (365 days) limited warranty. This warranty covers parts and labor. Please fill out the enclosed warranty card to validate your purchase and warranty. All returned service items whether under warranty or not, must be freight pre-paid and accompany a return authorization (R.A.) number. If the unit is under warranty, you must provide a copy of your proof of purchase invoice. Please contact American Audio® customer support at (800) 322-6337 for a R.A. number. All package not displaying a R.A. number on the outside of the package will be returned to the shipper.

1-YEAR LIMITED WARRANTY

A. American Audio® hereby warrants, to the original purchaser, American Audio® products to be free of manufacturing defects in material and workmanship for a period of 1 Year (365 days) from the date of purchase. This warranty shall be valid only if the product is purchased within the United States of America, including possessions and territories. It is the owner's responsibility to establish the date and place of purchase by acceptable evidence, at the time service is sought.

B. For warranty service, send the product only to the American Audio® factory. All shipping charges must be pre-paid. If the requested repairs or service (including parts replacement) are within the terms of this warranty, American Audio® will pay return shipping charges only to a designated point within the United States. If the entire instrument is sent, it must be shipped in its original package. No accessories should be shipped with the product. If any accessories are shipped with the product, American Audio® shall have no liability whatsoever for loss of or damage to any such accessories, nor for the safe return thereof.

C. This warranty is void if the serial number has been altered or removed; if the product is modified in any manner which American Audio® concludes, after inspection, affects the reliability of the product; if the product has been repaired or serviced by anyone other than the American Audio® factory unless prior written authorization was issued to purchaser by American Audio®; if the product is damaged because not properly maintained as set forth in the instruction manual.

D. This is not a service contract, and this warranty does not include maintenance, cleaning or periodic check-up. During the period specified above, American Audio® will replace defective parts at its expense, and will absorb all expenses for warranty service and repair labor by reason of defects in material or workmanship. The sole responsibility of American Audio® under this warranty shall be limited to the repair of the product, or replacement thereof, including parts, at the sole discretion of American Audio®. All products covered by this warranty were manufactured after January 1, 1990, and bear identifying marks to that effect.

E. American Audio® reserves the right to make changes in design and/or improvements upon its products without any obligation to include these changes in any products theretofore manufactured.

F. No warranty, whether expressed or implied, is given or made with respect to any accessory supplied with products described above. Except to the extent prohibited by applicable law, all implied warranties made by American Audio® in connection with this product, including warranties of merchantability or fitness, are limited in duration to the warranty period set forth above. And no warranties, whether expressed or implied, including warranties of merchantability or fitness, shall apply to this product after said period has expired. The consumer's and or Dealer's sole remedy shall be such repair or replacement as is expressly provided above; and under no circumstances shall American Audio® be liable for any loss or damage, direct or consequential, arising out of the use of, or inability to use, this product.

G. This warranty is the only written warranty applicable to American Audio® Products and supersedes all prior warranties and written descriptions of warranty terms and conditions heretofore published.

SPECIFICATIONS

GENERAL

Model: American Audio® VMS4™ - PC Media Controller

Dimensions:	482(L) x 325(W) x 40(H) mm 19"(L) x 12.75(W) x 1.5"(H)
Installation:	Place on flat surface or mount in flat case
Weight:	13 Lbs. / 6 Kgs
Power supply:	DC 5V Single Voltage: AC 100V, 50/60Hz (Japan) AC 110V, 60Hz (Colombia) AC 120V, 60Hz (U.S.A. and Canada) AC 127V, 60Hz (Mexico) AC 220V, 50Hz (Chile and Argentina) AC 220V, 60Hz (Philippines and Korea) AC 230V, 50Hz (Europe, New Zealand, South Africa, and Singapore) AC 240V, 50Hz (Australia and U.K.)
Power consumption:	5W
Environmental conditions:	Operational temperature: 5 to 35°C (41 to 95°F) Operational humidity: 25 to 85% RH (no condensation) Storage temperature: -10 to 60°C (14 to 140°F)
Accessories:	USB 2.0 Cable Switching Adaptor

ITEM	NORMAL	LIMIT	CONDITION
Output level: Gain Max, EQ Flat -	1.6V +/-0.5dB	1.6V +/-1dB	
Line & Mixed Out:	2.1V +/-0.5dB	2V +/-1dB	1KHz, 0dB
Phones:	1.2V	1V	1KHz, -20dB
Channel Balance: (From 0 to -40db For Mixed Out) -			
Line:	Within 0.5dB	Within 1dB	1KHz, 0dB
Mixed Out:	Within 1dB	Within 3dB	1KHz, 0dB
L/R Separation -			
Line:	97dB	85dB	1KHz, 0dB
Mixed Out:	95dB	85dB	1KHz, 0dB (Max. Out, EQ Flat)
T.H.D. + NOISE -			
Line:	0.025%	0.03%	1KHz, 0dB
Mixed Out:	0.025%	0.03%	1KHz, 0dB (Max. Out, EQ Flat)
Phones:	0.045%	0.05%	1KHz, 0dB (1V Output)
S/N Ratio -			
Line:	97dB	85dB	1KHz, 0dB
Mixed Out:	97dB	85dB	1KHz, 0dB (Max. Out, EQ Flat)
Dynamic Range (Max. Output, EQ Flat) -			
Line:	96dB	85dB	1KHz, -60dB
Mixed Out:	94dB	85dB	1KHz, -60dB
Frequency Response -			
Line:	17-16KHz +/-0.3dB	17-16KHz +/-1dB	
Mixed Out:	17-16KHz +/-0.3dB	17-16KHz +/-1dB	
Phones Max. Output:	1.6V	1.4V	1KHz, 0dB, THD=1%

NOTES: Specifications and improvements in the design of this unit and this manual are subject to change without any prior written notice.

CHECK THE AMERICAN AUDIO WEBSITE FOR DOWNLOADABLE USER SOFTWARE UPDATES.



©American Audio® World Headquarters:
6122 S. Eastern Ave., Los Angeles, CA 90040 USA
Tel: 323-582-3322 Fax: 323-582-3311
Web: www.americanaudio.us E-mail: info@americanaudio.us

American DJ Europe
Junostraat 2
6468 EW Kerkrade
Netherlands
service@americandj.eu / www.americandj.eu
Tel: +31 45 546 85 00 / Fax: +31 45 546 85 99